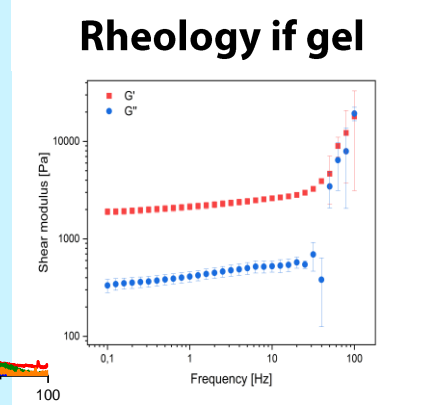
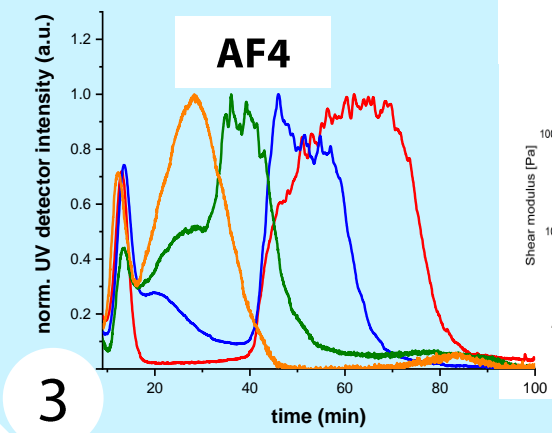
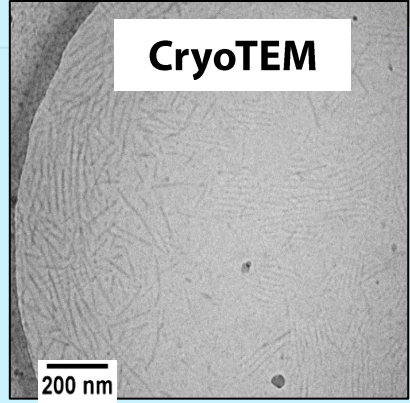
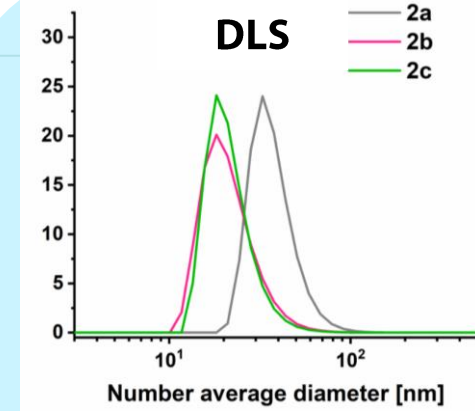
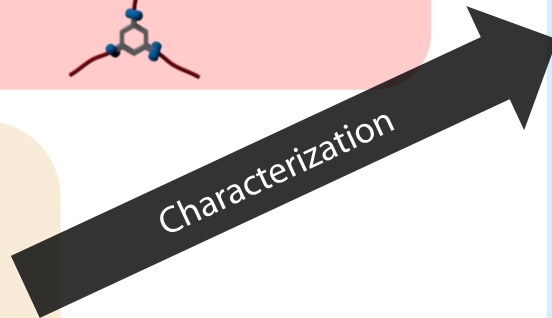
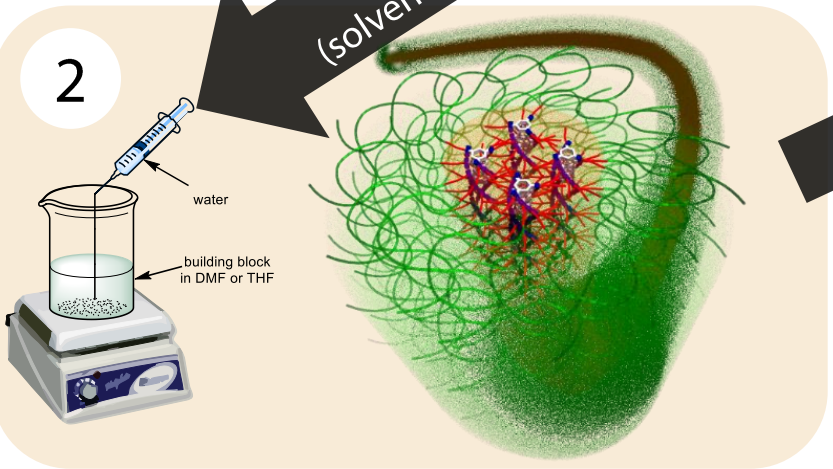
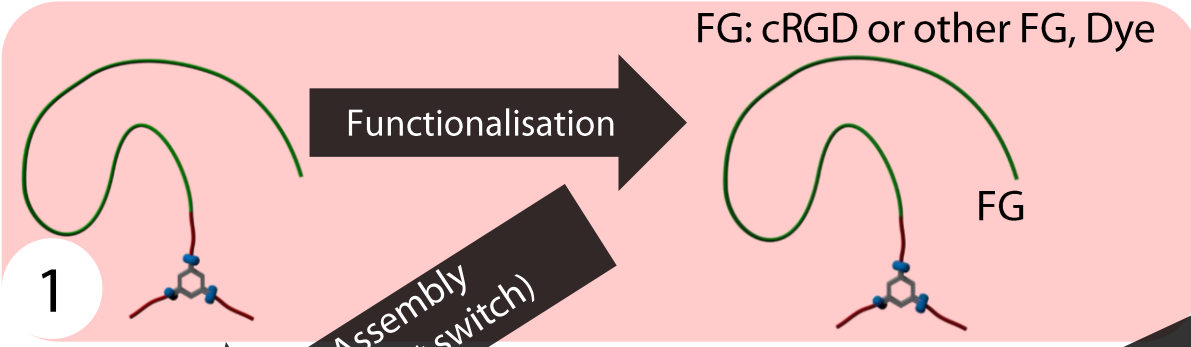


# cRGD functionalized BTP: synthesis, self-assembly, characterization, (and biological tests)



## 4 Biotesting (if time)



**Contact:**  
*alina.kasberg@uni-bayreuth.de and peer.noelte@uni-bayreuth.de*  
*Tel.: +49 (0) 921 55 3208 and +49 (0) 921 55 3294*  
[www.mc1.uni-bayreuth.de](http://www.mc1.uni-bayreuth.de)