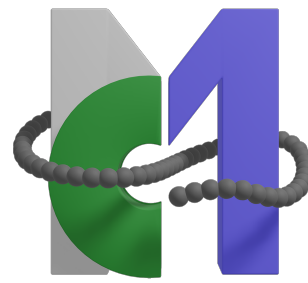
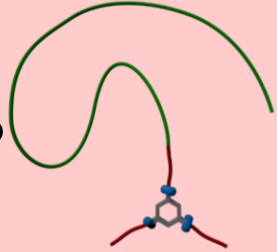


New building block for supramolecular polymer bottlebrushes: synthesis, self-assembly, and characterization



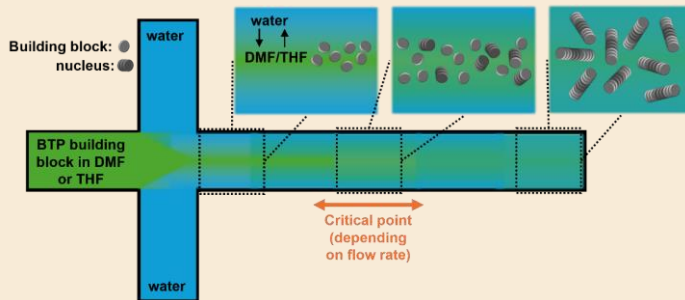
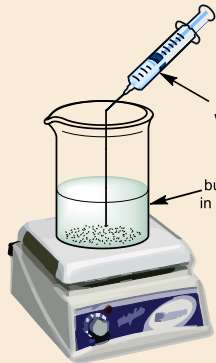
1. Synthesis

BTP with different amino acids (Tyrosine or Histidine)

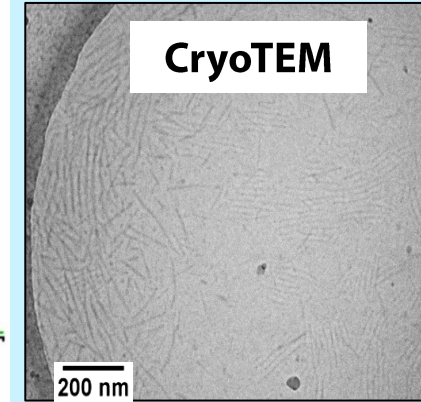
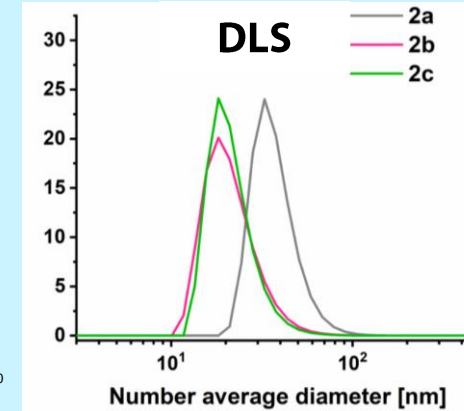
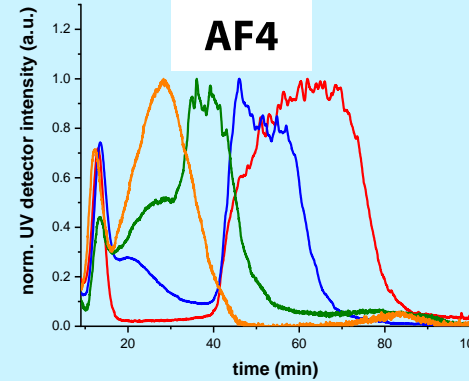


2. Assembly

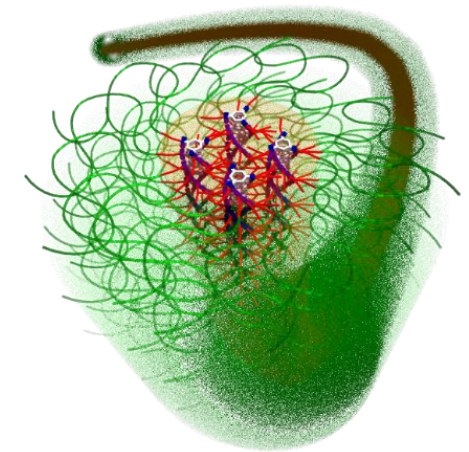
Solvent switch via syringe pump or microfluidics



3. Characterization



- **Future Goal:**
supramolecular copolymers



UNIVERSITÄT
BAYREUTH



Contact:

alina.kasberg@uni-bayreuth.de

Tel.: +49 (0) 921 55 3208

www.mc1.uni-bayreuth.de